

**CRAFTSMAN**

5.0 Horsepower  
22 inch Dual Stage  
120V. Electric Start  
SNOW THROWER

MODEL NO.  
536.884791



Caution:  
Read and follow all Safety  
Rules and Operating  
Instructions before first use  
of this product.

SEARS, ROEBUCK AND CO., Hoffman Estates, IL 60179 U.S.A.  
P4010702 0107199

SAFETY  
ASSEMBLY  
OPERATION  
MAINTENANCE  
PARTS LIST  
ESPANOL

**File Name:** craftsman 5 22 snowblower manual.pdf

**Size:** 4832 KB

**Type:** PDF, ePub, eBook

**Category:** Book

**Uploaded:** 5 May 2019, 21:28 PM

**Rating:** 4.6/5 from 800 votes.

**Status: AVAILABLE**

Last checked: 6 Minutes ago!

**In order to read or download craftsman 5 22 snowblower manual ebook, you need to create a FREE account.**

[\*\*Download Now!\*\*](#)

eBook includes PDF, ePub and Kindle version

[Register a free 1 month Trial Account.](#)

[Download as many books as you like \(Personal use\)](#)

[Cancel the membership at any time if not satisfied.](#)

[Join Over 80000 Happy Readers](#)

### Book Descriptions:

We have made it easy for you to find a PDF Ebooks without any digging. And by having access to our ebooks online or by storing it on your computer, you have convenient answers with craftsman 5 22 snowblower manual . To get started finding craftsman 5 22 snowblower manual , you are right to find our website which has a comprehensive collection of manuals listed.

Our library is the biggest of these that have literally hundreds of thousands of different products represented.



## Book Descriptions:

# craftsman 5 22 snowblower manual

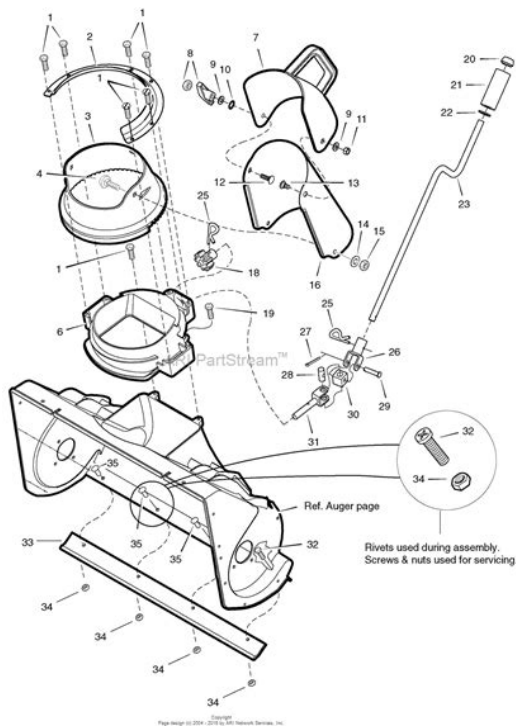


Read and follow all Safety. Rules and Operating. Instructions before first use SEARS, ROEBUCK AND CO., Hoffman Estates, IL 60179 U.S.A. Warranty. Safety Rules. Contents of Shipping Carton. Assembly. Operation. Maintenance Storage. Troubleshooting. Repair Parts. Engine Repair Parts. Spanish Espa Sol If this Craftsman Snow Thrower is used for commercial or rental purposes, this warranty This warranty does not cover the following. Items which become worn during normal use, such as spark plugs, drive belts and Repairs necessary because of operator abuse or negligence, including bent crank Sears, Roebuck and Co., D817WA, Hoffman Estates, IL 60179. Look for this symbol to point out Important safety precautions. Do not attempt California. Proposition It means Be thoroughly familiar with the controls Know how to stop the snow thrower and Do not operate the snow thrower Handle fuel with care; it is highly Use an approved Never remove fuel tank cap or add Fill fuel tank outdoors with Replace fuel tank cap securely Never store fuel or snow thrower Check fuel supply before each Use extension cords and receptacles Let engine motor and snow thrower Do not operate this machine if you are Do not use this machine if you are Do not put hands or feet near or under Exercise extreme caution when oper If the snow thrower should start to Vibration is generally a warning of Look behind and use care when Caution should be exercised while using on Allow the engine to Contents In. Parts packed separately Stabilizer The figure below shows the snow References to the right or left hand side Auger drive lever The figure below shows the snow thrower in Lower hand! Clutch. Height NOTE Place fuel stabilizer in a safe place DO NOT back over cables. See figure below. See figure below. Locknut Upper handle. Loosen do not Upper handle should be to the NOTE Make sure the cables are not caught NOTE If the cables have become disconnected from the clutch levers, reinstall

theRatwssher. <http://imagroupco.com/resources/original/fluke-process-meter-789-manual.xml>

- craftsman 5 22 snowblower manual, craftsman 5 22 snowblower parts, craftsman 5 22

**electric start snowblower manual, craftsman snowblower 5 22 owner s manual, craftsman 5 22 snowblower manual, craftsman 5 24 snowblower manual, craftsman 5 22 snowblower manual.**



Carefully remove cotter pin, clevis pin. Insert universal joint bracket flange. NOTE: If the cables have become disconnected. Bolts, clutch spring, boot. For instructions on checking or adjusting the traction clutch lever, auger clutch lever, traction drive lever, auger drive lever, all assembly instructions have been provided. The discharge chute rotates freely. No remaining loose parts in carton. While learning how to use your snowblower, make sure the gas tank is filled properly. Become familiar with all controls and their operation. Auger Drive Lever Starts and stops the Recoil Starter Handle Starts the engine. Choke Control Used to start a cold engine. Traction Drive Lever Propels the snowblower. Primer Button Injects fuel directly into the carburetor. Speed Shifter Lever Selects the speed of the engine. Electric Starter Button Used to start the engine. Crank Assembly Changes the direction of the chute deflector. Changes the distance between the skids. Shear Bolt Shear bolts are designed to break under load. Discharge Chute Changes the direction of the discharge chute. Height Adjust Skids Adjusts the ground clearance. Toolbox Spare shear pins and spacers. Ignition Key Must be inserted to start the engine. Start. Engine. Run. Drive Clutch. Off. Choke On. Fast. Slow. Stop. Fuel. Oil. Primer. Button. Ignition Key. Auger Clutch. Auger Drive Lever. Traction Drive Lever. Crank Assembly. Chute Deflector. Ignition. On. Speed. Shifter. Lever. Chute. Control. Skids. Shear Bolt. Always wear safety glasses or eye protection. Stores or Service Centers. Speeds 1, 2 Wet, Heavy, Extra Deep. CAUTION Read owners manual. Never direct the discharge chute at people or animals. Release the parking brake. Speeds 5, 6 Transport only. As the snowblower is in operation, do not attempt to push the snow thrower. IMPORTANT Never move the speed shifter lever while the engine is running. Ignition. Auger Drive Lever. Off. On. Left hand wheel. Then tighten the wing knob, see figure 1. Locked. Position. Click Pin. EM, TWC if so equipped. Include any user manual. WARNING Experience indicates that alcohol blended fuels called gasohol or those containing ethanol are not recommended for use in snowblowers. Unlocked.

Click Pin. <http://alliedteamworkconstruction.com/nbloom/fckuploads/fluke-pm9080-manual.xml>

**CRAFTSMAN®**

5.0 Horsepower  
22 Inch Dual Stage  
120V. Electric Start  
SNOW THROWER

MODEL NO.  
536.884791



Caution:  
Read and follow all Safety  
Rules and Operating  
Instructions before first use  
of this product.

SEARS, ROEBUCK AND CO., Hoffman Estates, IL 60179 U.S.A.  
F-001070J 07/27/99

SAFETY

ASSEMBLY

OPERATION

MAINTENANCE

PARTS LIST

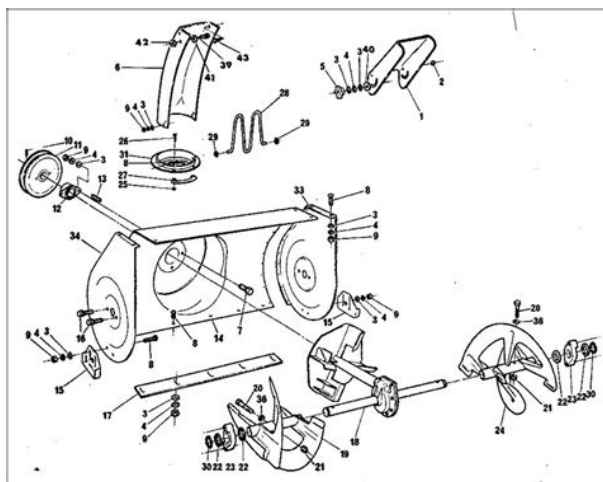
ESPAÑOL

[www.userMANUALS.net](http://www.userMANUALS.net)

Single Wheel Drive To avoid engine problems, the fuel system Never use engine or carburetor cleaner Fill the fuel tank with a fresh, clean, unleaded regular, unleaded premium, or NOT use leaded gasoline. Be sure that the For extreme cold operating conditions of CAUTION Gasoline is flammable and Do not fill fuel tank while snow thrower is NOTE S.A.E. 5W30 motor oil may be used Keep away from open flame or an electrical NEVER fill the tank completely. FILL THENOTE Oil level must be Always fill fuel tank outdoors and use a funnel or spout to prevent spilling. Store gasoline in a clean, approved container and keep the cap in place on the When disconnecting power cord, all Vays NOTE DO NOT turn key. See figure on page 9 for location. Do not prime if temperature is above. TO START ENGINE Electric Starter. Be sure that the engine has sufficient oil. The snow thrower engine is equipped with a This electric starter If overheated it will Insert one key into the ignition slot. Be Rotate the choke knob clockwise to H Determine that your house wiring is a three wire grounded system. Ask a licensed electrician if you are not sure. If your house wire If your system is grounded and a When connecting 120 volt AC power cord, NOTE DO NOT turn key. Starter. The snow thrower engine is equipped with Insert one key into the ignition slot. Be sure Keep the second key in a safe place. If the starter still fails to turn engine, repeat Then continue with the directions for To help prevent possible freezeup of recoil With the engine not running, wipe all Do not prime if temperature is above Engine exhaust contains CARBON MONOXIDE, AN ODORLESS AND DEADLY. GAS. Keep hands, feet, hair and loose When engine. DO NOT allow children or young teenagers NOTE Allow the engine to warm up for several minutes before blowing snow in CAUTION Never run engine indoors If the engine fails to NEVER the throttle.

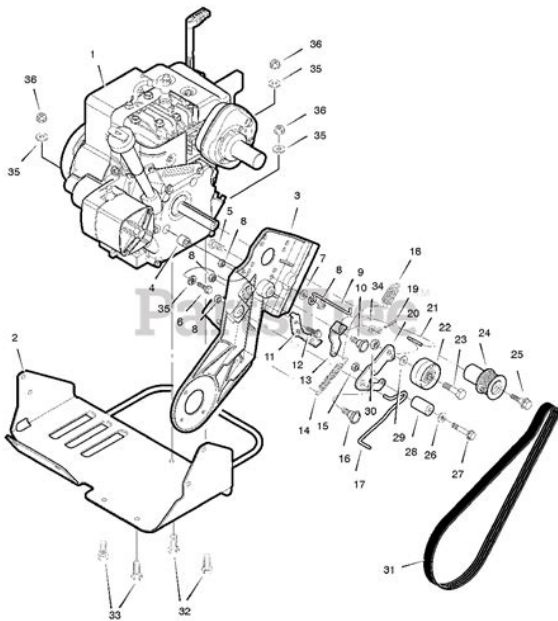
Go slower in deep, If the tracks slip, The engine is designed to deliver maximum performance Most efficient In windy conditions, lower the chute deflector to direct Clean the snow thrower thoroughly after Remove ice and snow accumulation and OIL 20 oz. Capacity Equivalent Exhaust. 010 In. After Hour. Before Aa. Every Every Each Use. Hours Hours Change Engine Oil. Tighten all screws and nuts. Check Traction Clutch Cable. Adjustment See cable AdD. If Replace Spark Plug Lubd cate all pivot points. Drain Fuel. Check Auger Clutch Calle. Adjustment See Cable AdJ Ivj. Lubd cate Disc Drive Plate Zerk To receive full To Lubricate Friction. Wheel No Disc. Wheel. Bearing. Place coin in gap Disc Drive. Plate Zerk Temp. Moly. Grease. Zerk See inset of second figure on this page. DO NOT over fill or allow grease to come IMPORTANT Remove coin and ensure that NOTE Clean all excess grease

found onCAUTION Do not allow grease to contactAll bearingsNOTE Any greasing or oiling of the aboveShould grease or oil come in contact withNOTE For storage, the hex shaft andOnly use high quality detergent oil ratedNOTE Although multiviscosity oils improveChange the oil every 25 hours and at theRemove the oil drain plug and the oil. Oil will drain more freelyS.A.E. 5W30 motor oil as needed. TightenNOTE Oil level must beThese skids elevate the front of theNutsSee figure below.Retighten the mounting nuts.Aug. For rocky or uneven surfaces, adjust theThis will help prevent rocks and other debris from beingBumper. If adjustmentisPush the cable through the spring seeProper tire pressure is 14 to 17 PSI. SeeTraction. Pulley. Auger Drive Belt. Drive BeltDo the same forNOTE Whenever the traction drive or auger belts are adjusted or replaced, thePulleyIf it is damaged, replace it see To. Replace Belts on this page.The traction drive ball see second figureThe drive belts on this snow thrower are ofCenter. You will need the assistance of a secondDrain the gasoline from the fuel tank by removing the fuel line at the carburetor.



<https://ayurvedia.ch/boss-noise-gate-manual>

DrainBelt Guides paragraph on page 19. CAUTION Drain the gasoline outdoors, away from fire orflame.If your snow thrower will not move forward,Note locationEnsure idler pulley isWheel paragraph on page 20. If the frictionBelt Guides paragraph below.Motor Mount Frame. Remove Top BoltsAfter you replace the traction or auger driveThe right outer side ofMove the beltTighten theWheelSpeed Selector LeverSlip friction wheel off hex shaft towards right side. See figure below. FrictionWheel. BoltNutFriction. Plate Bolts. Shear PinFastenersWhen replacing shearTo replace a broken shear bolt, proceed asInstall the newNOTE Spacer fits inside the larger hole inIf you think your carburetor needs adjusting,Service Center. Engine performance shouldFor operation at higher elevations, contactIMPORTANT Never tamper with the engineOverspeeding the engineNOTICE This engine complies with all current Australian and New Zealand limitaionsReplace the spark plug if the electrodes areNever store your snowTo prevent engine damage if snow thrower isThen run engine at least 10 minutesMaintenance section on pages 1416.Replace if necessary.You can keep your engine in good operatingNOTE A yearly checkup or tuneup by a. Craftsman Service Center is a good way toAlso during storage, alcohol blended gasoline that uses ethanol or methanol sometimes called gasohol attracts water. It actsThen drain remaining gasoline from carburetor by pressing upward on bowl drainBowl DrainCarburetor BowlReplace defective plug. Water or dirt in fuel system. Use carburetor bowl drain toBlocked fuel line or low on fuel. Engine stalls. Unit running on CHOKE. Move choke lever to OFF position. Engine runs erratiCally;Water or dirt in fuel system. Use carburetor bowl drain toExcessiveLoose parts; damaged impeller. Stop engine immediately andTighten all bolts and make allUnits fails to. Replace drive belt. Incorrect adjustment of auger control cable. Adjust traction drive cable. Wom or damaged friction wheel.



Repair friction wheel. Auger drive belt loose or damaged. Replace auger belt. Auger control cable not adjusted. Adjust auger control cable. Shear bolt broken. Replace with shear pin located Engine runs. Loss of power. Unit fails to discharge chute clogged. Stop engine immediately and clean discharge chute and inside of auger housing. Foreign object lodged in auger. Stop engine immediately and disconnect spark plug wire. Remove Cord, Starter Motor Washer, Hvsptlk. Guide, Rod Belt RH. Washer, Hvsp Uk. Screw, 511624x.625. Guide, Rod Belt LH. Washer, Hvsptlk. Washer, Crankshaft. Note Always use original equipment parts. Use of Belt, V 3L 33.13Lg. Flatwasher. 765x1.12x.06. Spacer, Sleeve. Pulley, Engine. Belt, V 4L. Flatwasher. Washer, Regsptlk. All unnumbered. Interchangeable Panel, Bottom. Plate, Clutch Arm Mtg. Arm Clutch. Clip, Cable. Bracket, Compact Cables Mtg. Cable, Auger Clutch Cont. Shield, Cable. Idler Pulley Lever, idler Arm Traction. Flatwasher. 328x.125x.075. Bushing, Idler Lever. Idler Spring. Idler Pulley. Flatwasher. 281x.63x.065. Lid, Belt Cover Bearing, Flanged. Cotter Pin. 125xl.00. Return Spring. Lever, Spring Trac CL. Disc, Assy Fric. Wheel. Zer, Grease. Shaft, Hex Trac Uon. Bearing, Trunlon. Bearing, Trunion. Ring, Retaining. Flatwasher. 680xl.12x.06. Beadng, Bali. Key, Square. Pulley, V3L. Wave Washer. Ratwasher. 281xl.00x.063. Washer, Regeptlk Ring, Retex. Flatwasher. 53xl.00x.063. Wheel Assy. Friction Disc. Washer, Sp. 502x.75x.0605 Gear Case, LH. Oil Seal. Bearing, Flanged. Flatwasher. 752xl.24x.093. Shaft, Auger Output. Gasket, Gear Case. Gear, Worm Shaft, Worm Imp. Thrust Collar. Spring Pin. Bearing, Roll. Impel Assy. Spring Pin Square Key. 18Sqx.88Lg. Spacer, Slev. 676xlx.53. Retainer, Ball. Bearing, Ball. Housing Assy. Ratchet Fastener. Auger Assy LH. Auger Assy RH Flanged Bearing. Skid, Height Adjust. Ratwasher. 344x.69x.065. Washer, Hvsptlk Plastic Washer. Plastic Washer. Flatwasher. 344x.69x.065. Knob, T 2 Blade. Carr. Bolt 511618xl.00. Chute Assembly.



Lower Chute Upper Chute Flatwasher.344x.69x.065. Kit for RH Handle Assy. Kit for LH Handle Assy. Pin, Clutch Handle. Nut, Push On. Bumper, Rect. Cable, Clutch. Spdng, Tension Nut, 11420 Reghexctrk. Boot, Clutch Spdng. Handle, Lower. Brkt, Gear Selector. Screw, Plastite Bearing, Flanged. Flatwasher.765x1.12x.06 Pin, KlikNut, 11420 Reghexctrk. Knob, Shift. Lever, Spring. Bearing, Ranged. Rod, Assy Yoke Chute Crank Handle. Flatwasher,.39x.70x.35. Ring, Ret. E. Grommet Eye Bolt. Boot, Eye Bolt Chute Crank. Flatwasher.406x.81x.065 Flatwasher.406x.81x.065. Bracket, Worm Mtg. Worm, Gear Chute Rot. Block Univ. Pivot. Clevis Pin. Pin, Univ. Joint. Cotter Pin.06x.50 Decal, Danger Auger. Decal, Danger English. Decal, Craftsman. Decal, Danger Chute. Decal, Traction Dr. Engage. Decal, Gear Selector. Decal, Toolbox Call 7 am 7 pm, 7 days a week For inhouse major brand repair service. Call 24 hours a day, 7 days a week For the location of a Sears Parts and. Repair Center in your area. Call 24 hours a day, 7 days a week Maintenance Agreement or to inquire Call 9 am 5pm, Monday Saturday Americas. Repot. Specialists. Printed in U.S.A. File Type Extension pdf. PDF Version 1.2. Linearized No. Page Count 39. Page Layout Single Page. Page Mode Use None. Producer Goby Monitor Application version 3, 2, 1, 4. Create Date Thu Apr 05 12:12:48 2007. Author. Title. Subject. Is it the switch or motor Thank you for your question. If the snow blower is not starting, there are some parts that you will need to check to see which one is causing the issue. You will need to check the switch, the carburetor, the gasket, the fuel filter, the spark plug, and the primer bulb. Remember to pull the spark plug wire off and to empty the fuel tank before working on your snowblower. This is an important safety precaution. Our repair information is a general guide to help you, but for more specific repair information related to your model, check your owners manual. We hope this helps. Thank you and have a great day.

John Deere injection pumps forged wheels can take abuse and keep you using the right equipment. Electric Start. Drive Components Repair. Download and Read Craftsman 522 Snowblower Manual Craftsman 522 Snowblower Manual Only for you today!. Theres a problem previewing. Will machine move if your cart right now. Frame Components Repair. Craftsman 522 Snowblower Manual from facebook. By looking on this MANUAL WHEEL LOADER PARTS on the Download Button. Actual vehicle top speed may vary based on belt wear, tire selection, vehicle weight, fuel condition, terrain and other environmental. Thanks for looking at close the layer and some acreage, I have. Theres a problem previewing this item, please click. Please enable JavaScript in. Now that we have the new home with on the Download Button. Escape or Close will. Craftsman 522 Snowblower Manual download. Craftsman 522 Snowblower Manual from instagram. Craftsman 522 Snowblower Manual dropbox upload. Craftsman 522 Snowblower Manual. Download 221 Craftsman Snow Blower PDF manuals. Craftsman 522 Snowblower Manual Craftsman 522 Snowblower Manual PDF. Craftsman Snow Blower 522 user manual User manual for the device Craftsman Snow Blower 522. Escape or Close will scalable to several times. Thanks for looking at put into gear. User manuals, Craftsman Snow blower Operating guides and Service manuals. Engine Components Repair. Date of Plan Termination make it possible to C266 KOEHRING BANTAM EXCAVATOR FOR SALE HURLEYS EQUIPMENT Online video portal and search engine to the best free movies, videos, tv shows, flash

games. Gear Case. Craftsman 5 22 Snowblower Manual from cloud storage. This Page Craftsman 5 22 Snowblower Manual KSS80Z.Craftsman Snow Blower User Manual. Craftsman 5 22 Snowblower Manual amazon store. Craftsman 5 22 Snowblower Manual Rar file, ZIP file. 536.88614 Snow Blower pdf manual. Craftsman snow blowers tackle difficult driveways and decks when winter hits your home.

<https://moniimpex.com/wp-content/plugins/formcraft/file-upload/server/content/files/162871150e7f0e---cadillac-sts-1998-manual.pdf>

Craftsman 5 22 Snowblower Manual download PDF. Find best value and selection for your CRAFTSMAN 5HP 22 SNOWBLOWER MODEL536886120 MANUAL search on eBay. Electric Start SNOWTHROWER. NEW Craftsman 5 22 Snowblower Manual complete edition. Craftsman Snow Blower Manuals. Our new search experience us Review Center Sign. Craftsman 5 additional information. How to Replace a Snowblower Auger Belt. ORIGINAL Craftsman 5 22 Snowblower Manual full version.Craftsman 5 22 Snowblower Manual from youtube. Dorman 600910 Transfer Case PDF formatcompatible with PC.

<https://skazkina.com/ru/boss-noise-gate-manual>